



Studio Gas Fires

Aesthetics Performance Versatility

These are the elements that define the Studio range. Effortlessly becoming the focal point of your interior, a Studio fire brings far more than just heat to your home.



Each fire is designed to seamlessly blend beauty and performance, offering superb flame visuals and high efficiency heating. All at the touch of a button.

Presented with a variety of elegant styling options, the Studio range lets you tailor your fire to complete your home.



We are proud to have been recognised as an award-winning manufacturer, for our high-quality products and innovative technology. **Find out more at [gazco.com/awards](https://www.gazco.com/awards)**

Cover Image: Studio 2, Edge+ frame with Log-effect fuel bed and EchoFlame Black Glass lining



Studio 2, Edge+ frame with Log-effect fuel bed and EchoFlame Black Glass lining



Contents

Choosing your Studio fire.....05

Studio Inset.....08

Studio 1..... 10

Studio 2..... 12

Studio Slimline.....14

Studio 1 Slimline16

Studio 2 Slimline16

Studio Slimline Zero Clearance18

Studio Duplex20

Frame options..... 23

Summary & options 24

Technical information..... 26

Flue requirements..... 30

Also available 32

Important Information..... 34

Studio 2, Edge 'Cool Wall' with Log-effect fuel bed and EchoFlame Black Glass lining. See page 28 for further details on Cool Wall kits.

Relax - it's a Gazco Fire...

When you choose Gazco, quality and innovative technology are assured. From traditional models to contemporary designs, Gazco is committed to creating the ultimate flame-effect gas and electric fires. Our UK research and development laboratories are amongst the most advanced in the world, ensuring that the very latest innovations are incorporated into our appliances.



Gazco is an ISO9001 and ISO14001 accredited company. Our rigorous quality control system ensures that all our appliances are safety checked and that they comply with the appropriate regulations, with all fires in this brochure bearing both the UKCA and CE mark. Similarly, our environmental management systems ensure we work in a sustainable manner, whilst endeavouring to protect the environment by minimising any possible impact from our operations.

With over 40 years of proven experience building quality gas fires, you can be confident that when you select a Gazco fire, you are getting the best of British design, engineering and manufacturing.



WIN THE COST OF YOUR PRODUCT BACK!*

by registering your product online for your free extended warranty. See page 31 for details.

Expert Retailer Network

We take great care to ensure that our fires are designed, tested and manufactured to the highest possible quality and safety standards.

We are equally careful to make certain our fires are sold and installed correctly to ensure they provide you with years of enjoyment. Our products are only available from experienced, independent retailers who will be happy to show you a selection of models locally in their showrooms, often fully operational. These independent retailers will discuss your individual requirements, including both technical (such as sizing the heat output to your room and advising on your flue type) and design, to ensure that you select the most appropriate product for your home.

Our experienced retailers will also be able to advise on, or assist with, the installation process as well as help provide any after-sales support and servicing your appliance may require in the future.

Whilst we encourage our retailers to promote fireplace products and their outlets via the internet, we do not believe suitable levels of customer care and satisfaction can be obtained from purchasing the product only online and we would strongly recommend that you consider this when undertaking your research and making a purchasing decision. Furthermore, please be aware that we do not offer

technical support (beyond our statutory responsibilities) for products bought via nationwide online sales, where this support would normally be offered by one of our qualified, independent retailers.



Find your local Expert Retailer

Find your nearest retailer by visiting:
www.gazco.com/retailers

Seven Year Extended Warranty

Your Gazco Expert Retailer will provide you with a Two Year Warranty for your new gas fire. This can be extended to a Seven Year Warranty by registering your fire with Gazco. Please note, these warranties exclude certain consumable parts. Full warranty terms and conditions are available to view at www.gazco.com.



How to choose your Studio fire...

With a wealth of design options complemented by a choice of sizes, linings and fuel bed effects, these beautifully contemporary fires will add instant style and presence to any modern interior. The following pages will guide you through the wide selection of possibilities and styling options that are synonymous with the Studio range...

Step 1 Types & Sizes

Studio fires can be selected in a variety of different types and sizes including Slimline and double-sided options.

Step 2 Fuel & Lining Effects

Many Studio fires can be customised with a range of fuel and lining effects to transform the flames.

Step 3 Frames

Studio fires can be styled to perfectly suit your décor. Depending on the model, choose to install your Studio as a frameless Edge or with one of the many stylish steel and glass frames available.

Studio Gas Fires

Studio gas fires pair with all manner of interior preferences, with their host of versatile styling options, from stunning frames to fuel effects. For optimal versatility, Studio fires are available in a choice of types, sizes and heat outputs to suit a variety of interior spaces. Choose from high efficiency inset, double sided or specially designed Slimline models for cavity wall installations.



Studio 2, Edge+ frame with Log-effect fuel bed and EchoFlame Black Glass lining



Studio 1 & 2

Conventional Flue

Studio conventional flue fires come in two sizes, each offering a wide range of fuel effects and linings – from a classic, realistic log-effect fuel bed to the coastal-inspired driftwood-effect display.



Studio 1, Profil frame with Log-effect fuel bed and Black Reeded lining

Studio 1 & 2 Slimline

Balanced Flue

The high efficiency Studio Slimline fires have been specifically designed for cavity wall installations. Offered in a choice of two sizes, they feature an ultra-slim profile whilst still providing a superb view of the flames.



Studio 1 Slimline, ZC Glass frame in Black Glass with Log-effect fuel bed and EchoFlame Black Glass lining

Studio 2 Duplex

Balanced Flue

The double-sided Studio 2 Duplex allows the flame visuals to be enjoyed from either side. Producing up to 7.9kW of heat output, this balanced flue fire has a highly realistic Log-effect fuel bed.



Studio 2 Duplex, Expression frame with Log-effect fuel bed and Black Reeded lining

Studio 1 & 2

Conventional Flue Fires

Studio 1 and Studio 2 inset gas fires are beautifully crafted for homes with conventional flue installations, bringing both warmth and style to your living space. Each size offers a wide range of customisation options, allowing you to tailor the look and feel to perfectly complement your interior décor.

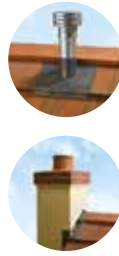


Studio 2, Edge+ frame with Log-effect fuel bed and EchoFlame Black Glass lining



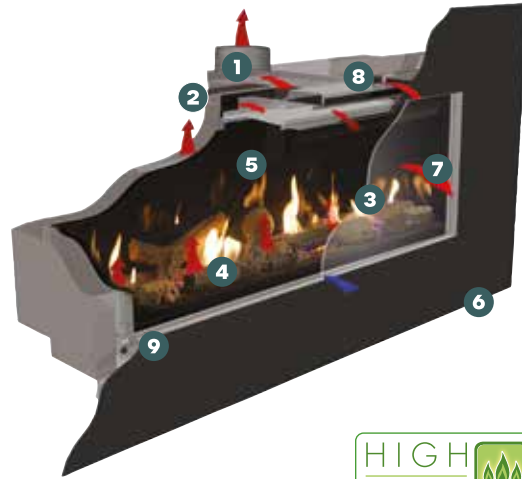
A conventional flue gas fire range

Conventional flue Studio fires are designed to use an existing brick or stone chimney, or if your home does not have a chimney, a prefabricated chimney system that can be fitted when your fire is installed. A prefabricated chimney system creates the same circulation of heated air as a brick or stone chimney and exits the roof as a metal flue.



Key Features

1. Conventional Flue connection
2. Linerless installation with no need for additional adapters
3. Glass Fronted
4. Choice of fuel effects
5. Choice of linings
6. Choice of frame styles
7. Convected and radiant heat
8. Convected heat system outlet
9. Simple drop down door for easy maintenance access
10. Remote control included*
11. External battery holders for ease of battery change**
12. Optional mains adaptor**



For further information on your flue and air vent requirements please see page 30. * Illustrated below ** Not illustrated

Programmable Thermostatic Remote Control

Studio gas fires come complete with a Programmable Thermostatic remote that also includes the additional benefits of a programmable timer and thermostatic controls, ensuring that whenever you return home, your house will always be warm and welcoming. Studio fires have an external battery which can be discretely and conveniently located up to 3 metres away from the fire. Alternatively, you can choose the optional mains adaptor for an installation without batteries.



Fuel Effects and Lining Options

The fuel effects in each Studio fire are designed to create a stunning centrepiece, whether you choose the traditional ambience of the log or driftwood or the contemporary minimalism of pebbles and stones. Additionally, your Studio 1 or 2 inset gas fire can be customised with a choice of lining options, that offer a dramatically different aesthetic and backdrop to the flames within.



Gazco's EchoFlame Black Glass lining immediately enhances the depth and magic of the fire, creating a three-sided reflection of the dancing flames and leaving a lasting impression.



Log-effect



Driftwood-effect



Pebble & Stone



Studio 2, Profil frame with Log-effect fuel bed and EchoFlame Black Glass lining



Studio 1, Glass frame with Pebble & Stone fuel bed and Black Reeded lining

Studio 1



Studio 1, Expression frame with Log-effect fuel bed and EchoFlame Black Glass lining



Studio 1, Edge with Driftwood-effect fuel bed and EchoFlame Black Glass lining

	Efficiency & Heat Output			Chimney or Flue Options		Gas Type		Fuel Bed			Linings		Control
	EFFICIENCY	EFFICIENCY CLASS	HEAT OUTPUT	BRICK CHIMNEY	PRE-FABRICATED	NATURAL GAS	LPG GAS	LOGS	DRIFTWOOD	PEBBLE & STONE	BLACK REEDED	BLACK GLASS	PROGRAMMABLE THERMOSTATIC REMOTE
Studio 1 Glass Fronted Conventional Flue	72%	E	4.60kW	✓	✓	✓	✓	✓	✓	✓	✓	✓	✓

Frame Options

For the complete selection of frames available with Studio fires see page 23.

* Efficiency and heat output figures are based upon the maximum achieved in the options available. For more detailed technical information, including firebox dimensions and installation requirements, see page 26 onwards.

Studio 2



Studio 2, Profil frame with Driftwood-effect fuel bed and EchoFlame Black Glass lining



Studio 2, Edge 'Cool Wall' with Log-effect fuel bed and EchoFlame Black Glass lining (see page 28 for further details on Cool Wall kits)

	Efficiency & Heat Output			Chimney or Flue Options		Gas Type		Fuel Bed			Linings		Control
	EFFICIENCY	EFFICIENCY CLASS	HEAT OUTPUT	BRICK CHIMNEY	PRE-FABRICATED	NATURAL GAS	LPG GAS	LOGS	DRIFTWOOD	PEBBLE & STONE	BLACK REEDED	BLACK GLASS	PROGRAMMABLE THERMOSTATIC REMOTE
Studio 2 Glass Fronted Conventional Flue	81%	C	6.20kW	✓	✓	✓	✓	✓	✓	✓	✓	✓	✓

Frame Options

For the complete selection of frames available with Studio fires see page 23.

* Efficiency and heat output figures are based upon the maximum achieved in the options available. For more detailed technical information, including firebox dimensions and installation requirements, see page 26 onwards.



Studio 2, Edge+ frame, with Log-effect fuel bed and Black Reeded lining

Studio Slimline

Balanced Flue Fires

Available in two sizes, these slimmer depth fires have been created to allow an easier, quicker and more cost effective installation option, whilst still retaining all the unmistakable characteristics of the Gazco Studio range.



Studio 2 Slimline Profil frame with Log-effect fuel bed and EchoFlame Black Glass lining

A Slimline fire for cavity wall installation

Studio Slimline fires have been specifically developed to allow the highly desirable aesthetics of a landscape format to be achieved in a wider variety of homes by simply recessing into the internal leaf of a cavity wall. Available in two sizes, both come complete with a dedicated rear exit balanced flue termination kit for easy installation - see page 30 for further information. For even more installation possibilities, the Zero Clearance range allows you to install Slimline fires in walls constructed from conventional materials such as studwork and plasterboard (see page 18).

Although compact in design, these highly efficient fires have a generous heat output which is easily controlled with the Programmable Thermostatic remote control.

Key Features

1. Shallow firebox depth of just 155mm
2. Balanced Flue connection
3. Choice of linings
4. Choice of contemporary or realistic fuel effects
5. Choice of frame styles
6. Convected and radiant heat
7. Convected heat system outlet
8. Programmable Thermostatic remote control
9. Rear exit Balanced Flue Termination Kit included*
10. External battery holder for ease of battery change*
11. Optional mains adaptor*



* Not illustrated

Slimline Frame Options

Studio Slimline fires can be styled to your interior with the one of the many high quality frames available, a selection of which are shown on these pages and overleaf. Alternatively, for a minimalist look, the frameless Edge design allows for a striking, hole-in-the-wall installation. For a complete frame style reference please see page 23.

Fuel Effects and Lining Options

To further extend your options for personalisation, there is a choice of linings and fuel effects available for the Studio Slimline fires. Each of the lining choices, including timeless Black Reeded, classic Brick-effect or depth-enhancing EchoFlame Black Glass can be paired with either realistic logs or contemporary white stone fuel effects for Studio 2 Slimline.



With each combination offering a significantly different appearance to the fire, you can be sure to select the perfect combination of fuel effect, lining and frame style to suit your interior decor.



Black Reeded Lining



Brick-effect Lining



Studio 1 Slimline, Glass frame with White Stone fuel bed & Black Reeded lining

Studio 1 & 2 Slimline



	Efficiency & Heat Output			Chimney or Flue Options	Gas Type		Fuel Bed		Linings			Control
	E% [†]		kW									
	EFFICIENCY	EFFICIENCY CLASS	HEAT OUTPUT	BALANCED FLUE	NATURAL GAS	LPG GAS	LOGS	WHITE STONES	BRICK EFFECT*	BLACK REEDED*	BLACK GLASS	PROGRAMMABLE THERMOSTATIC REMOTE
Studio 1 Slimline Balanced Flue	82%	C	3.80kW	✓	✓	✓	✓	✗	✓	✓	✓	✓
Studio 2 Slimline Balanced Flue	82%	C	5.00kW	✓	✓	✓	✓	✓	✓	✓	✓	✓

Frame Options

For the complete selection of frames available with Studio fires see page 23.

[†] Efficiency and heat output figures are based upon the maximum achieved in the options available. For more detailed technical information, including firebox dimensions and installation requirements, see page 26 onwards. *Lining set can be purchased separately.



Studio 1 Slimline, Verve frame with Log-effect fuel bed and EchoFlame Black Glass lining

Studio Slimline Zero Clearance Range

Studio 1 Slimline, ZC Glass frame with Log-effect fuel bed and Black Reeded lining



Studio Slimline Zero Clearance frame kits increase your installation possibilities around the home by allowing for simpler and easier fitting of Slimline fires into existing walls.

Unlike many gas fires, the Slimline Zero Clearance range does not need a specially constructed non-combustible wall to house the appliance. The Zero Clearance Frame kit includes an enclosure that houses the fire and circulates air around the appliance, reducing the heat transferred to the installation wall by directing it back into the room.

This means you can choose to fit your Slimline fire into walls with standard plasterboard and stud-work thanks to the Zero Clearance kit's ability to keep wall temperatures to a minimum. Zero Clearance Slimline fires are available in both Studio 1 and 2 Sizes.

Key Features

1. Zero clearance box enclosure to reduce wall temperatures (included with frame)
2. Shallow firebox depth of just 155mm
3. Balanced flue connection
4. Choice of linings
5. Choice of contemporary or realistic fuel effects
6. Contemporary black glass frame finish
7. Convected and radiant heat system
8. Convected heat system outlet
9. Programmable Thermostatic remote control
10. Rear exit balanced flue termination kit included*
11. External battery holder for ease of battery change*
12. Optional mains adaptor*

* Not illustrated





Studio 2 Slimline, ZC Glass frame in Black Glass with Log-effect fuel bed and EchoFlame Black Glass lining

Studio Duplex

Balanced Flue Fires

For a truly awe-inspiring focal point in your home, the high efficiency, double-sided Duplex fire offers the ultimate solution to stylish dual space heating.



Studio 2 Duplex, Glass frame with Log-effect fuel bed and Black Reeded lining



Studio 2 Duplex Profil frame with Log-effect fuel bed and Black Reeded lining

	Efficiency & Heat Output			Chimney or Flue Options	Gas Type	Fuel Bed	Lining	Control
	EFFICIENCY	EFFICIENCY CLASS	HEAT OUTPUT	BALANCED FLUE	NATURAL GAS	LOGS	BLACK REEDED*	PROGRAMMABLE THERMOSTATIC REMOTE
Studio 2 Duplex Balanced Flue	92%	A	7.90kW	✓	✓	✓	✓	✓

* Efficiency and heat output figures are based upon the maximum achieved in the options available. For more detailed technical information, including firebox dimensions and installation requirements, see page 26 onwards.

The Studio 2 Duplex offers the unique installation possibility of locating the fire between two separate living areas, allowing the stunning flames and 7.9kW heat output to be appreciated from both sides.

Frame Options

The Studio 2 Duplex has the benefit of dual styling possibilities, allowing you to select a different look for either side of the fire. For the complete selection of frames available with Studio fires see page 23.



Frame Options

Studio fires have many frame options available, including a number of different styles in steel or glass. These stunning frame options have all been designed specifically to complement this contemporary fire range and offer you a spectrum of styling possibilities.

Edge Pages 4, 6, 11, 12 & 16



Edge+ Pages 3, 6, 8, 13, 22, 25 & Front Cover



Expression Pages 11, 25 & 35



Glass Pages 10, 15, 20 & 24



ZC Glass Pages 7, 18, 19 & 25

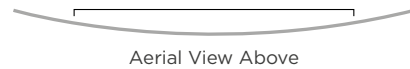


Black Glass front with Graphite Steel rear

Verve Page 17



Graphite



Aerial View Above

Profil Pages 7, 9, 12, 14, 16, 21 & Back Cover



Anthracte

Steel 2 Page 27



Graphite

	Studio 1	Studio 2	Studio Slimline	Studio Duplex
Edge	✓	✓	✓	✓
Edge+	✓	✓	X	✓
Profil	✓	✓	✓	✓
Expression	✓	✓	✓	✓
Steel 2	✓	✓	✓	✓
Glass	✓	✓	✓	✓
Verve	✓	✓	✓	✓
ZC Glass	X	X	✓	X

Summary & Options

Diverse and versatile, the Studio fire range offers numerous possibilities from stylish frames and lining options to installations without a chimney. The table opposite shows the various options available for each Studio fire.





	Inset Studio Fires		Studio Slimline		Studio Duplex
	Studio 1 CF	Studio 2 CF	Slimline 1 BF	Slimline 2 BF	Studio 2 Duplex BF
Log-effect	✓	✓	✓	✓	✓
Driftwood-effect	✓	✓	X	X	X
Pebble & Stone	✓	✓	X	X	X
White Stone	X	X	X	✓	X
Installation Type:					
Hearth Mounted Installation	X	X	X	X	X
Wall Installation	✓	✓	✓	✓	✓
Cavity Wall Specific Fire	X	X	✓	✓	X
Double Sided Fire	X	X	X	X	✓
Key Features:					
Remote Control	✓	✓	✓	✓	✓
Timer and Thermostat Programmable	✓	✓	✓	✓	✓
Glass Fronted High Efficiency	✓	✓	✓	✓	✓
Natural Gas	✓	✓	✓	✓	✓
LPG	✓	✓	✓	✓	X
Choice of Linings	✓	✓	✓	✓	X
Frameless 'Edge' Option	✓	✓	✓	✓	X
Conventional Flue ODS safety device*	✓	✓	N/A	N/A	N/A
Balanced Flue Firebox Relief Venting System [^]	N/A	N/A	✓	✓	✓
Additional air vent required	X	✓	X	X	X
Conventional Flue	✓	✓	X	X	X
Balanced Flue	X	X	✓	✓	✓
Maximum Heat Output	4.60kW	6.20kW	4.25kW	5.00kW	7.90kW
Efficiency Class	E	C	C	C	A
Maximum Efficiency	72%	81%	82%	82%	92%

* ODS (Oxygen Depletion Sensor) - This Conventional Flue safety feature will shut off the gas supply to the burner in the event of a reduction to oxygen levels in the room.
[^] All Gazco Balanced Flue fires have relief vents in the firebox ensuring compliance with EN 613:2001 for delayed ignition safety standards.

Technical Information

Gas Fire Information

The following pages provide the dimensional, heat input/output, efficiency and product code information you will need to choose your new Gazco fire. For more detailed specifications, please consult your Gazco retailer. Complete installation instructions may be downloaded from www.gazco.com.

Studio 1

Supplied with Programmable Thermostatic remote control

Choose your fire, fuel effect and lining set from the options below (framing options can be found on page 23).

Step 1: Fire Choice		Heat Input	Heat Output	Efficiency	Efficiency Class
⊗ 123-007	Studio 1 Conventional Flue Natural Gas	6.30kW	4.10kW	72%	E
⊗ 123-603	Studio 1 Conventional Flue LPG	6.90kW	4.60kW	72%	E

Step 2: Fuel Effect

CE1839	Studio 1 Log Set
923-632	Studio 1 Pebble & Stone Set †
923-019	Studio 1 Driftwood Set †

Step 3: Lining Sets

923-517	Studio 1 Conventional Flue - Black Reeded Lining Set
923-240	Studio 1 Conventional Flue - Black Glass Lining Set

† Available to Inset Studio fires only

The above information is to assist you in your choice of a suitable Gazco fire. This is not intended to be all the information required to install your fire. This can be obtained from your local Gazco retailer or you can download the full installation instructions from the Gazco website at www.gazco.com

Studio 2

Supplied with Programmable Thermostatic remote control

Choose your fire, fuel effect and lining set from the options below (framing options can be found on page 23).

Step 1: Fire Choice		Heat Input	Heat Output	Efficiency	Efficiency Class
⊗ 123-012	Studio 2 Conventional Flue Natural Gas	8.50kW	6.20kW	81%	C
⊗ 123-611	Studio 2 Conventional Flue LPG	8.50kW	6.20kW	81%	C

Step 2: Fuel Effect

CE1840	Studio 2 Log Set
923-665	Studio 2 Pebble & Stone Set †
923-037	Studio 2 Driftwood Set †

Step 3: Lining Sets

923-744	Studio 2 Conventional Flue - Black Reeded Lining Set
923-267	Studio 2 Conventional Flue - Black Glass Lining Set

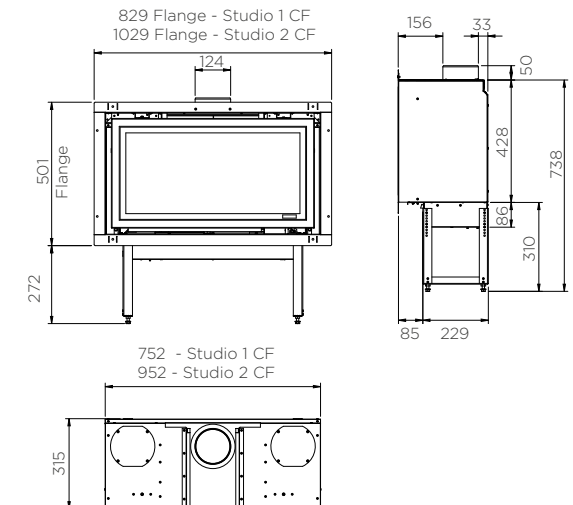
Additional Information

Conventional Flue Installation

The conventionally flued Glass Fronted Studio has been designed with ease of installation in mind and can be installed two ways:

- 1) Direct connection to a 5" flue liner or 5" twin wall gas vent system
- 2) No additional fluing is needed when it is installed into an existing builders opening below a masonry chimney and sealed to the fireplace opening (assuming that the chimney is of sound construction).

Glass Fronted, Conventional Flue Studio Dimensions (mm)



Studio 1 & 2 Frame Information

Description	Frame Finish	Glass Fronted CF Product Code	Frame Size (mm)		
			W	H	D
Studio 1					
Profil	Anthracite	8710CFAN01	846	520	13
Steel 2	Graphite	923-883	1264	528	27
Expression	Graphite	923-546	950	624	40
Verve	Graphite	923-300	1264	528	53
Glass	Black Glass	923-628	1264	528	29
Edge+*	Black	923-006	788	464	43
Studio 2					
Profil	Anthracite	8717CFAN02	1046	520	13
Steel 2	Graphite	923-556	1500	528	27
Expression	Graphite	923-574	1150	624	40
Verve	Graphite	923-514	1500	528	53
Glass	Black Glass	923-535	1500	528	29
Edge+*	Black	923-017	988	464	43

Studio 1 & 2 Options & Accessories

Glass Fronted Studio Fires

Product Code	Description
8572	Warm air ducting kit (2 outlets)
999-620	Remote system mains adaptor

Studio 1

8727CFEK01	Edge fitting kit for conventional flue
8727CFCW01	Cool Wall fitting kit for conventional flue
923-517	Black Reeded lining set for conventional flue
923-240	Black Glass lining set for conventional flue

Studio 2

8727CFEK02	Edge fitting kit for conventional flue
8727CFCW02	Cool Wall fitting kit for conventional flue
923-744	Black Reeded lining set for conventional flue
923-267	Black Glass lining set for conventional flue



Studio 2, Steel2 frame with Log-effect fuel bed and EchoFlame Black Glass lining

*When choosing an Edge+ frame an Edge kit is also required for installation. † For more Balanced Flue information and options please refer to our Concentric Flue System brochure which can be viewed or downloaded online at www.gazco.com

The above information is to assist you in your choice of a suitable Gazco fire. This is not intended to be all the information required to install your fire. This can be obtained from your local Gazco retailer or you can download the full installation instructions from the Gazco website at www.gazco.com

Studio Edge & Cool Wall Kits

Available for Glass Fronted Studio fires

Edge Kit

This kit is screw-mounted to the front flange of the outer firebox. The L-shaped attachments can either provide a 20mm return against which high temperature plasterboard/screed can be butted up for the 'clean edge' look or, if the firebox flange is on the outside of a brick or studwork wall, allow ceramic or stone tiles to be fixed with a similar look. The Edge Kit is finished in black to complement the Studio and is perfect for installations on tiled walls or using stone slips. For a seamless Edge installation on a plastered wall it we suggest using the below 'Cool Wall' kit.

Cool Wall Kit

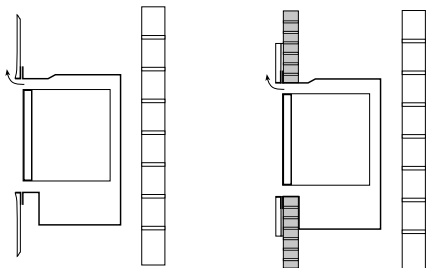
Again, screw-mounted to the front flange of the outer firebox, the 60mm deep U-shaped attachments of the Cool Wall kit are designed primarily for studwork false chimney breasts. The additional depth allows some of the heat to be vented up into the void above the firebox and then re-enter the room at a higher level. The effect is to produce a cooler wall immediately above the appliance than would otherwise be the case. The Cool Wall Kit is left unfinished so that it can be painted to match the front face of your fireplace.

Edge Kit

Installation method for:

Studwork or false chimney breast application
Brick or masonry chimney breast application

Convected heat flows directly out into room
Convected heat flows directly out into room



When using the Edge Kit the fire is recessed by 20mm from the finished wall surface and the kit is finished in black to complement the Studio.

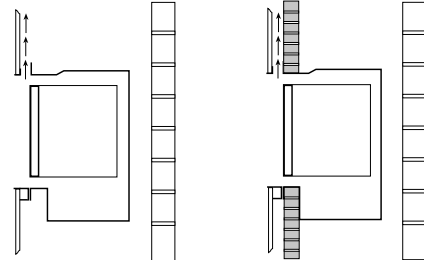
NB: When using the Edge Kit, heat resistant board and high temperature finishing plaster must be used. Please refer to installation instructions for full details.

Cool Wall Kit

Installation method for:

Studwork or false chimney breast application
Brick or masonry chimney breast application

Convected heat flows up through an open channel & can be vented back into room at a higher point
Convected heat flows up through an open channel & can be vented back into room at a higher point



When using the Cool Wall Kit the fire is recessed by 60mm from the finished wall surface and the kit is left unfinished so that it can be painted to match your decor.

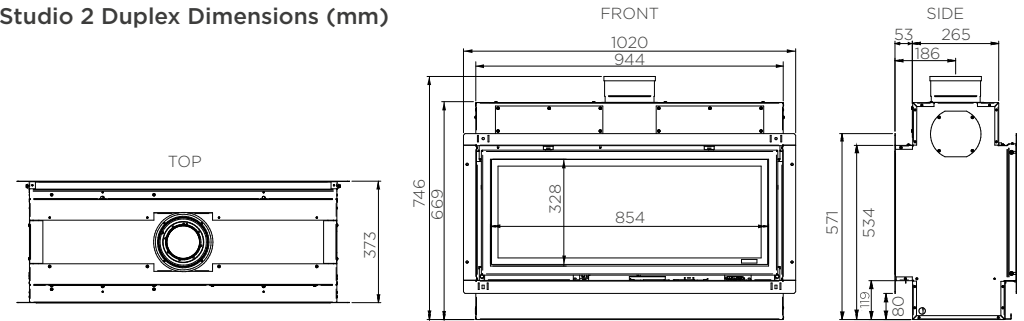
NB: Full installation information, including the requirement for the use of non-combustible materials, can be downloaded from www.gazco.com

Studio 2 Duplex Fires

Fire Information

Product Code	Flue Type	Gas Type	Fuel Effect	Heat Input	Heat Output	Efficiency	Efficiency Class	Lining
❗ 123-329	Balanced Flue	Nat. Gas	Logs	9.6kW	7.9kW	92%	A	Black Reeded

Studio 2 Duplex Dimensions (mm)



Frame Information

Description	Frame Finish	Product Code	Frame Size (mm)		
			W	H	D
Profil	Anthracite	8717BFAN02	1036	510	13
Steel 2	Graphite	923-556	1500	528	30
Expression	Graphite	923-709	1140	614	40
Verve	Graphite	923-514	1500	528	56
Glass	Black Glass	923-535	1500	528	33.5

Studio 2 Duplex Options

Product Code	Description
8727BFEK02	Edge fitting kit for balanced flue
8572	Warm air ducting kit (2 outlets)
923-696	Duplex - Black Reed Lining Set
8567	Balanced flue kit - up and out †
8524	Balanced flue kit - vertical †
999-201	Horizontal Exit terminal guard (required for below 2m) †
999-620	Remote system mains adaptor

† For more Balanced Flue information and options please refer to our Concentric Flue System brochure which can be viewed or downloaded online at www.gazco.com

‡ Available as an upgrade to Studio fires with a log effect fuel bed

The above information is to assist you in your choice of a suitable Gazco fire. This is not intended to be all the information required to install your fire. This can be obtained from your local Gazco retailer or you can download the full installation instructions from the Gazco website at www.gazco.com

Studio 1 & 2 Slimline Fires

Studio 1 Slimline Fire Information

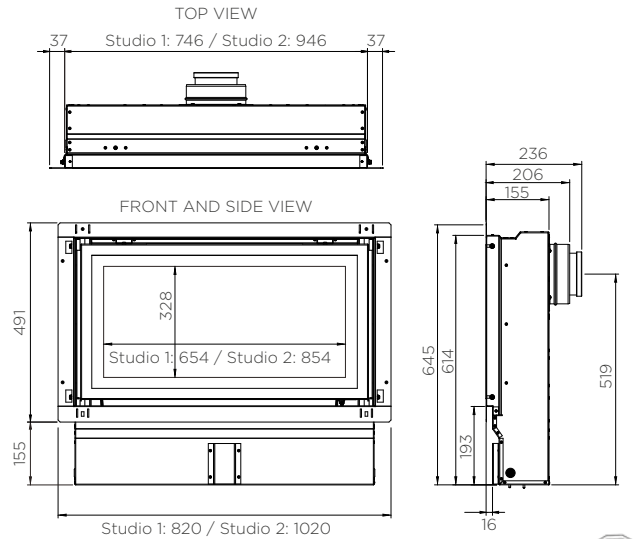
Product Code	Description	Flue Type	Gas Type	Fuel Effect	Heat Input	Heat Output	Efficiency	Efficiency Class	Lining
⊗ 123-143	Studio 1 Slimline	Balanced	Nat. Gas	Logs	5.2kW	3.8kW	82%	C	Black Glass
⊗ 123-623	Studio 1 Slimline	Balanced	LPG	Logs	5.1kW	3.8kW	82%	C	Black Glass

Studio 2 Slimline Fire Information

Product Code	Description	Flue Type	Gas Type	Fuel Effect	Heat Input	Heat Output	Efficiency	Efficiency Class	Lining
⊗ 123-102	Studio 2 Slimline	Balanced	Nat. Gas	Logs	6.1kW	4.5kW	82%	C	Black Glass
⊗ 123-545	Studio 2 Slimline	Balanced	LPG	Logs	6.6kW	5.0kW	82%	C	Black Glass
⊗ 123-117	Studio 2 Slimline	Balanced	Nat. Gas	White Stones	6.1kW	4.5kW	82%	C	Black Glass
⊗ 123-571	Studio 2 Slimline	Balanced	LPG	White Stones	6.6kW	5.0kW	82%	C	Black Glass

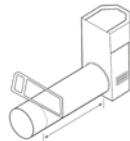
Studio Slimline Dimension (mm)

Dimensions are the same for both models, except where specified



The Studio 1 and 2 Slimline comes complete with a specific rear exit balanced flue termination kit (8526) included.

395 x 200 x 200 mm (H x W x D) Guard supplied. Cut to length as required on site.



Studio 1 Slimline Frame Information

Description	Frame Finish	Product Code	Frame Size (mm)		
			W	H	D
Profil	Anthracite	8710BFAN01	836	510	13
Steel 2	Graphite	923-883	1264	528	30
Expression	Graphite	923-656	940	614	40
Verve	Graphite	923-300	1264	528	56
Glass	Black Glass	923-628	1264	528	33.5
ZC Glass**	Black Glass	923-757	940	615	31

Studio 2 Slimline Frame Information

Description	Frame Finish	Product Code	Frame Size (mm)		
			W	H	D
Profil	Anthracite	8717BFAN02	1036	510	12.5
Steel 2	Graphite	923-556	1500	528	27
Expression	Graphite	923-709	1140	614	40
Verve	Graphite	923-514	1500	528	53
Glass	Black Glass	923-535	1500	528	29
ZC Glass**	Black Glass	923-772	1140	615	31

Studio 1 Slimline Options

Product Code	Description
8727BFEK01	Edge fitting kit for BF †
8727BFCW01	Cool Wall fitting kit for BF †△
923-826	Black Reeded Lining Set ‡
923-765	Brick-effect Lining Set ‡
923-124	Black Glass Lining Set ‡
999-620	Remote system mains adaptor

Studio 2 Slimline Options

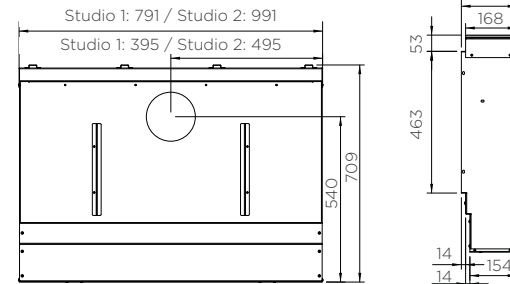
Product Code	Description
8727BFEK02	Edge fitting kit for BF †
923-226	Black Reeded Lining Set ‡
923-273	Brick-effect Lining Set ‡
923-314	Black Glass Lining Set ‡
999-620	Remote system mains adaptor

△ Whilst stocks last

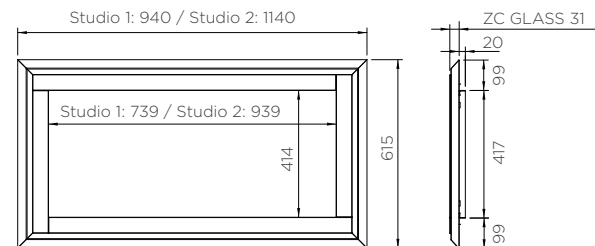
Zero Clearance Frame Dimensions (mm)

Dimensions are the same for both models, except where specified

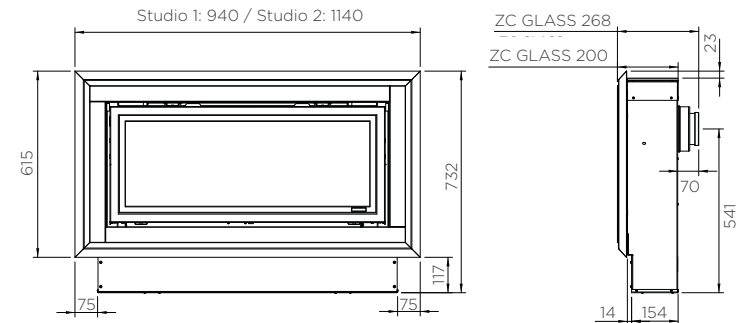
ZERO CLEARANCE BOX DIMENSIONS



FRAME DIMENSIONS



COMPLETE PRODUCT DIMENSIONS (FRAME & ZERO CLEARANCE BOX)



** ZC Frames come complete with the Zero Clearance Box

The above information is to assist you in your choice of a suitable Gazco fire. This is not intended to be all the information required to install your fire. This can be obtained from your local Gazco retailer or you can download the full installation instructions from the Gazco website at www.gazco.com

Your Home & Flue Requirements...

Conventional Flue

Conventional flue systems are for use with Gazco's Studio 1 and 2 cassette fires. They are easily recognisable as either a conventional brick or stone chimney, or as a pre-fabricated chimney system. Should your home have neither at present, it is usually possible to have a pre-fabricated system installed in your home if required.



Brick / Stone Chimney (Class 1)

The chimney stack rises well above the roofline and is topped by a traditional chimney pot or gas terminal. This type of chimney relies on the natural circulation of heated air to expel the products of combustion up your chimney.



Pre-fabricated Flues (Class 1 & 2)

You will see a metal flue cowl on your roof. Some are all metal whilst others may terminate through a short rectangular pot (but without a chimney stack). These flues create the same circulation of heated air as a brick or stone chimney.

Balanced Flue

Balanced flues work in conjunction with Gazco's Studio Slimline & Studio Duplex gas fires. The appliance is completely sealed from the room into which it is installed (so there are no draughts and heating efficiency is increased) and a twin-wall pipe vents directly to an outside wall.



Balanced Flue (No chimney required)

Air for combustion is drawn in through the outer pipe whilst the inner pipe removes the combustion gases to the exterior of the property. Depending on the fire selected, the twin-walled pipe may exit horizontally through an external wall or vertically through the roof. Gazco offers a comprehensive range of balanced flue system components. Please refer to our dedicated Concentric Flue System brochure which can be requested from your retailer or viewed online at www.gazco.com.

No Air Vent Required (UK)

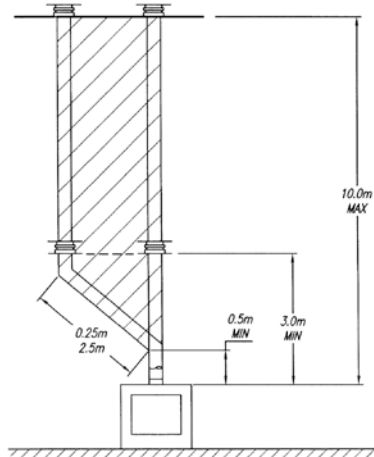
All fires shown with this symbol have the advantage of not normally requiring an air vent*. Please discuss this in full with your local retailer.

**Requirements in the Republic of Ireland are different.*

Balanced Flue Options

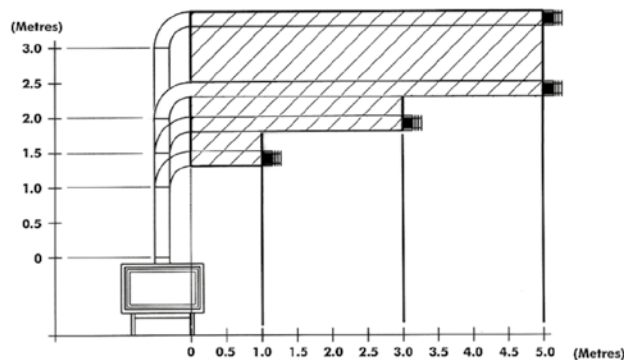
Gazco offers a comprehensive range of balanced flue system components. Please refer to our dedicated Concentric Flue System brochure which can be requested from your retailer or viewed online at www.gazco.com.

Vertical from the top of the appliance



All Studio Sizes

Vertical from the top of the appliance then horizontally out



Studio 2 Duplex - Nat Gas

WIN

THE COST OF YOUR PRODUCT BACK!*

For further home inspiration you can view real life installations at our Customer Showcase page and share your thoughts and photos of your new stove or fire installation to enter our draw!

- We will publish your entry on our Customer Showcase
- You will be entered into a draw for the chance to win the cost of your product back.
- **Gain a second entry** by registering your product online for your free extended warranty at gazco.com/registration



PREVIOUS WINNER!



"Really happy with the stove. I still can't believe it!"



"Cosy & Beautiful"



"Efficient, economical and stunning"



"Makes My Home, Home"



"Everyone thinks it looks amazing...superb!"

View real life installations and submit your review at:
gazco.com/customershowcase

*Terms and conditions apply. See online for details.



Also available...



Onyx Avanti 65 Gas
with Expression Frame



Onyx Avanti Gas Fires

Elevate your space with the unparalleled quality and sophistication of Onyx Avanti Gas fires. These luxurious inset fires feature rolling flames wrapping around lifelike Split Oak log-effects and a glowing ember-effect bed for ultimate realism. Enhanced with our EchoFlame™ Black Glass Lining, these captivating flame visuals mirror the beauty of a traditional woodburning fire, offering the pinnacle of luxury and contemporary design.

Available in two sizes, the 65 and 85, and as either natural gas or LPG models, they are a perfect fit in any modern interior. **For more information on Avanti Gas fires, please contact your local retailer or view and download the brochure at www.onyxfires.com**





Gazco eStudio 165R with log-effect



Stovax Studio 2 Profile

Have you considered Electric?

If you are interested in electric alternatives, the Stovax Heating Group is pleased to offer a vast portfolio of electric fires with superb flame visuals. Offering all the ambient warmth of woodburning and gas models, our innovative electric fires provide breathtaking realism that can be controlled from the comfort of your sofa.

From our luxury Onyx Avita electric fire collection, to the versatility of the Gazco eStudio or eReflex ranges, each model offers high efficiency and can be enjoyed with or without the heat for year-round ambience.



For more information, visit gazco.com/electric

Stovax Studio Woodburning Fires

If you appreciate the landscape design and elegant aesthetics of the Gazco Studio range, you will be equally captivated by the Studio and Studio Air Woodburning fires, also available from the Stovax Heating Group. Immerse yourself in the warmth and elegance that these fires bring to your living space, combining cutting-edge technology with stunning design.

The Stovax Studio and Studio Air ranges offer Ecodesign-exceeding efficiency, with the latest Cleanburn and Airwash systems for optimal heat output and clear views of the spectacular flames.

Ask your local Stovax retailer for more information or download the Stovax Studio and Studio Air Woodburning Fires brochures from www.stovax.com



Important Information

Care and maintenance

Traditional materials, such as polished steel and brass, tarnish on contact with air, especially when also exposed to heat. To help minimise this effect, we recommend fires receive regular treatment with suitable proprietary cleaners. Additionally, please remember that gas fires will require servicing annually by a qualified gas installer (GasSafe in United Kingdom, or RGI (Registered Gas Installer) in Republic of Ireland).

Warranty and Product Improvement

Your Gazco Expert Retailer will provide you with a Two Year Warranty for your new gas fire. This can be extended to a Seven Year Warranty provided your fire has been registered with Gazco. Please note, the warranty excludes certain consumable parts. Full warranty terms and conditions are available to view at www.gazco.com.



Gazco pursue a policy of continuous product improvement, therefore, whilst our products are correct at the time of the photography, we reserve the right to make alterations and amendments. Exact product details should be discussed with your retailer at the time of purchase.

Air Ventilation for Gas Fires

To comply with gas appliance installation regulations, all Glass Fronted Studio 2 fires with a conventional flue require additional ventilation into your room. For further information, please consult either your Gazco retailer or the Gazco Technical Information on our website www.gazco.com to confirm the ventilation required. All other fires featured in this brochure do not require additional ventilation.

Technical Specifications

All specifications given in this brochure are approximate. Actual specifications for each individual product will vary according to model. Your Gazco retailer will be pleased to provide any further information you require. Alternatively you may view or download specification sheets from www.gazco.com.

Installation and Safety

Gazco gas fires must be fitted by a qualified gas installer (Gas Safe registered in the United Kingdom or RGI in the Republic of Ireland) who should also verify the proposed site conditions are fully suitable for the product selected. Complete installation instructions for many models can be obtained prior to purchase by viewing or downloading them from www.gazco.com. Please note that all parts of these fires, particularly the glass panel in the door, become extremely hot during operation and can result in serious injury and burns if touched. It is therefore recommended that a fireguard complying with BS 8423 (latest edition) is used in the presence of young children, the elderly or infirm.

Colours / Flame pictures

Owing to variations in studio lighting and printing inks, the finishes/colours of fires illustrated in this brochure may differ slightly from actual models. Before purchasing, please ask your retailer to show you finish/colour samples. Whilst all the flame pictures shown in this brochure are of actual fires, flame pictures may vary depending on the installation, flue conditions and geographical/surrounding features that may effect the efficiency of the flue.

*Studio 2, Expression frame with Log-effect
fuel bed and Black Reeded lining*



Studio 2 with Profil frame, Log-effect fuel bed and EchoFlame Black Glass lining



Stovax & Gazco Limited, Spitfire Avenue,
Skypark, Clyst Honiton, Exeter, EX5 2FR

Tel: 01392 261999 • Email: info@gazco.com

gazco.com   



Find your local Expert Retailer

Find your nearest retailer by visiting:
www.gazco.com/retailers



Gazco gratefully acknowledges the assistance of the following companies with photographic settings:
www.furniturevillage.co.uk; www.romo.com; www.debenhams.com; www.theorangetree.co.uk;
www.justshutters.co.uk; www.homebase.co.uk; www.lauraashley.com; www.loaf.com; www.nestinteriors.com;
www.graceandgloryhome.co.uk; www.stbridgetnurseryseries.co.uk; www.johnlewis.com; www.wayfair.com;
www.veryvintagehire.co.uk; www.carpetrightright.co.uk; www.beachbros.co.uk; www.birlea.com;
www.originalstyle.com; www.amtico.com; www.chunkymonkeyfurniture.co.uk; www.wallsandfloors.co.uk;
www.desenio.co.uk; www.ikea.com; www.bricktilecompany.com; www.andrewmartin.co.uk

Your Gazco Stockist:

GZSTUDIO0326

